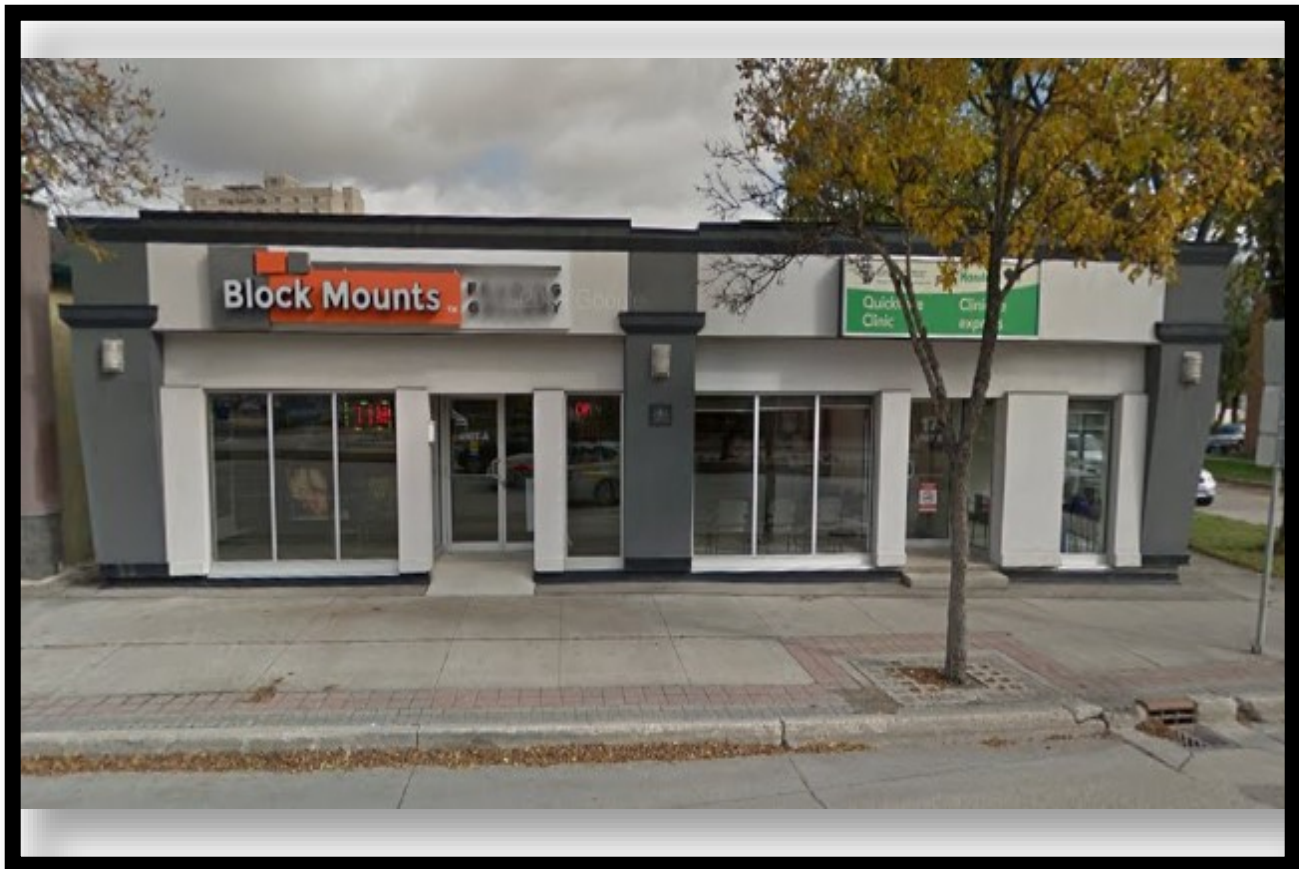




For Sale

17 St. Mary's Road



Mark Thiessen
204.794.5700
markthiessen@remax.net

M

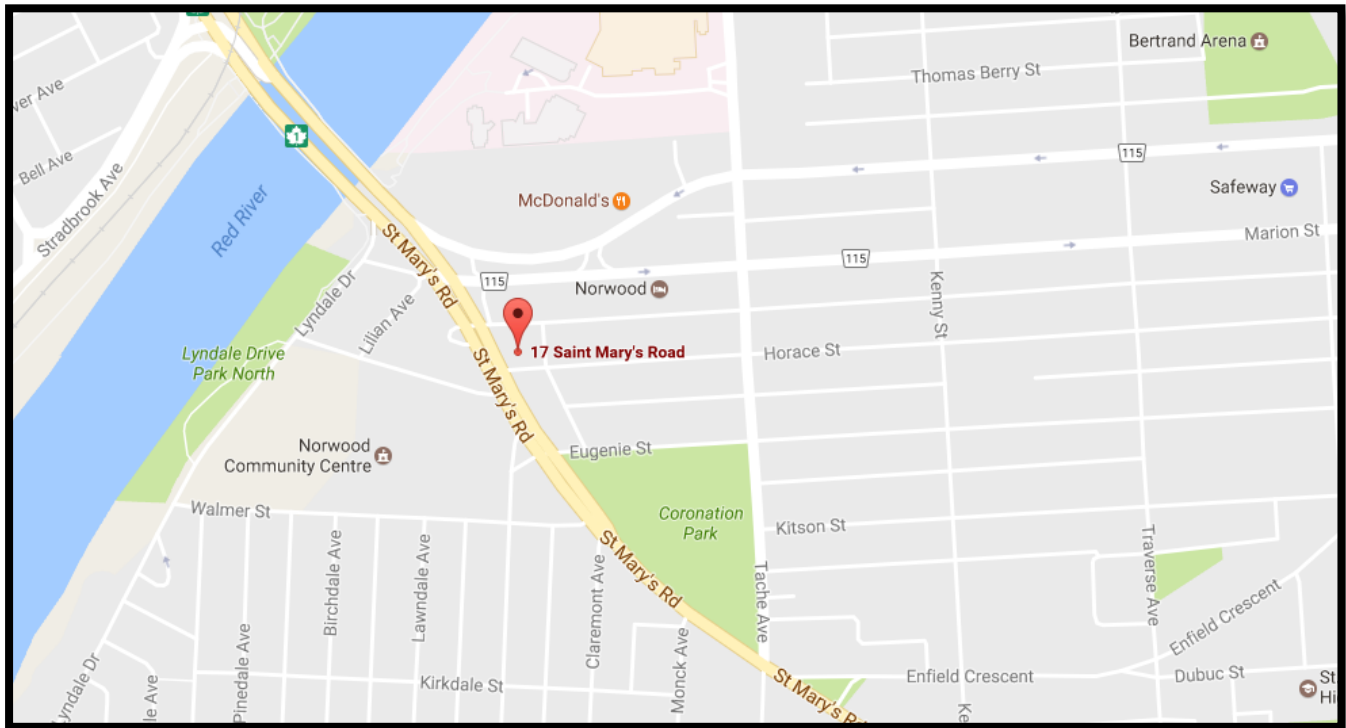
T

Property Description



- Fully renovated and maintained to a very high standard
- Convenient parking behind building
- Prominent signage visibility to St Mary's Road
- Turnkey medical clinic featuring 5-6 treatment rooms
- HVAC throughout with individual zones
- Recent renovations done to City of Winnipeg Code
- 2nd unit features a picture gallery and framing shop with front showroom and manufacturing space behind.

Property Details



Asking Price:	\$1,400,000.00
Building Size:	5,764 square feet
Lot Size:	7,995 square feet
Zoning:	C2
Property Tax:	\$21,400.24 (2016 Est.)
Location:	Located on the border of St. Boniface and Norwood Flats just outside of downtown

The information contained herein has been provided to RE/MAX professionals by others. We do not warrant its accuracy. You are advised to independently verify the information prior to submitting an offer & to provide for sufficient due diligence in an offer. The info contained herein may change from time to time without notice. The property may be withdrawn from the market at any time without notice.

RE/MAX Commercial is a division of RE/MAX professionals. Each office independently owned and operated.