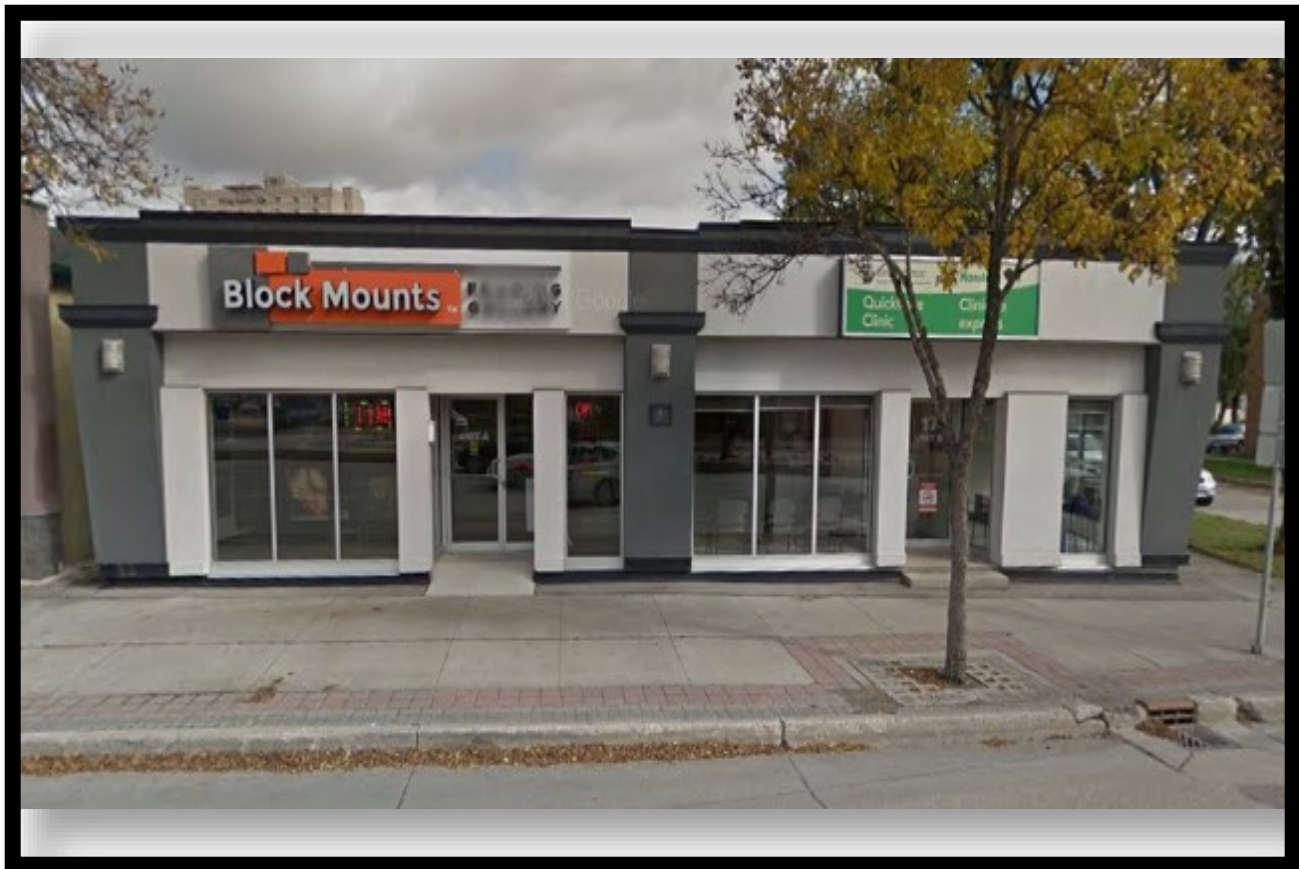




For Lease

17-A St. Mary's Road



Mark Thiessen
204.794.5700
markthiessen@remax.net

M

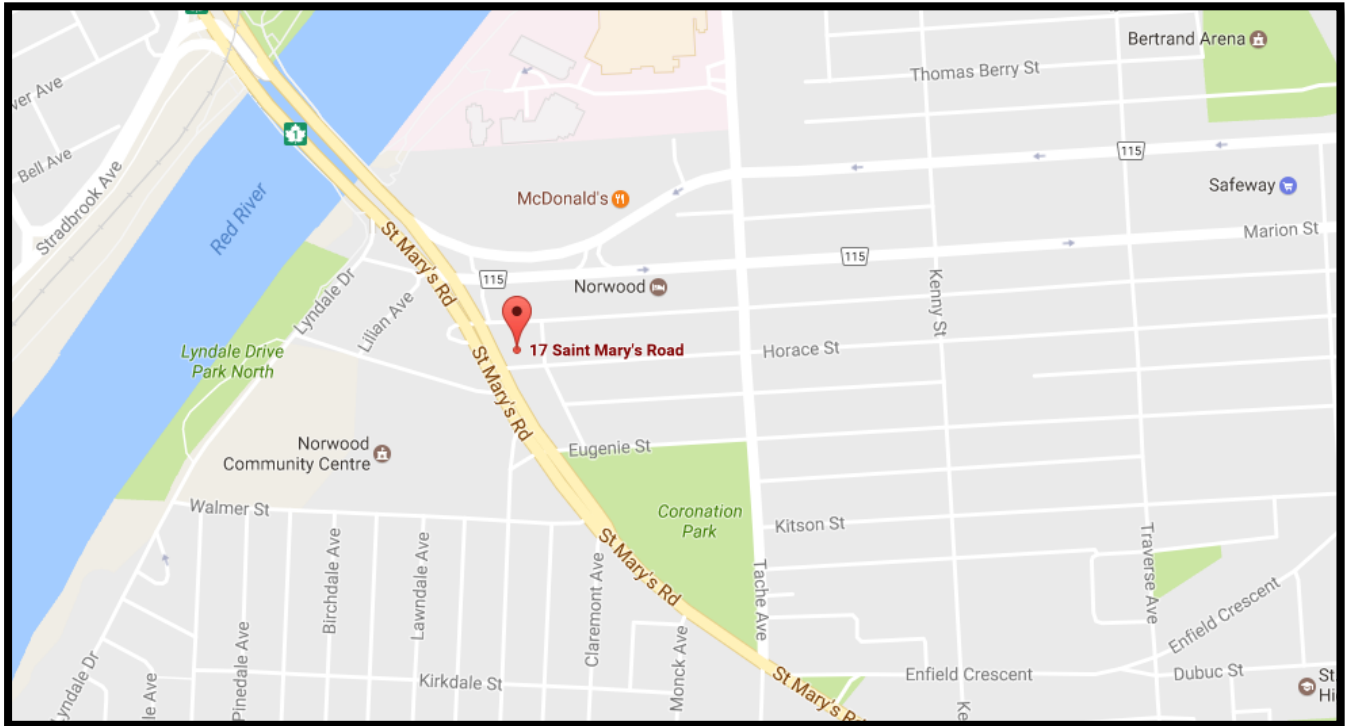
T

Property Description

Located on the border of St. Boniface and Norwood Flats just outside downtown Winnipeg

- Fully renovated and maintained to a very high standard
- Convenient parking behind building
- Prominent signage visibility to St Mary's Road
- HVAC throughout with individual zones
- Currently used as a picture gallery and framing shop with front showroom and manufacturing space behind.
- Unit is nicely appointed and would be well suited for any type of art gallery among other uses.

Property Details



Asking Price: \$17.00 per square foot

CAM: \$6.07 per square foot with Hydro

Tax: \$3.71 per square foot

Size: 2996 sf

Zoning: C2

Property Management Fee: 5% of Basic Rent

Location: Prominently located on St Mary's Road

The information contained herein has been provided to RE/MAX professionals by others. We do not warrant its accuracy. You are advised to independently verify the information prior to submitting an offer & to provide for sufficient due diligence in an offer. The info contained herein may change from time to time without notice. The property may be withdrawn from the market at any time without notice.

RE/MAX Commercial is a division of RE/MAX professionals. Each office independently owned and operated.