



For Lease



1151 Pembina Highway

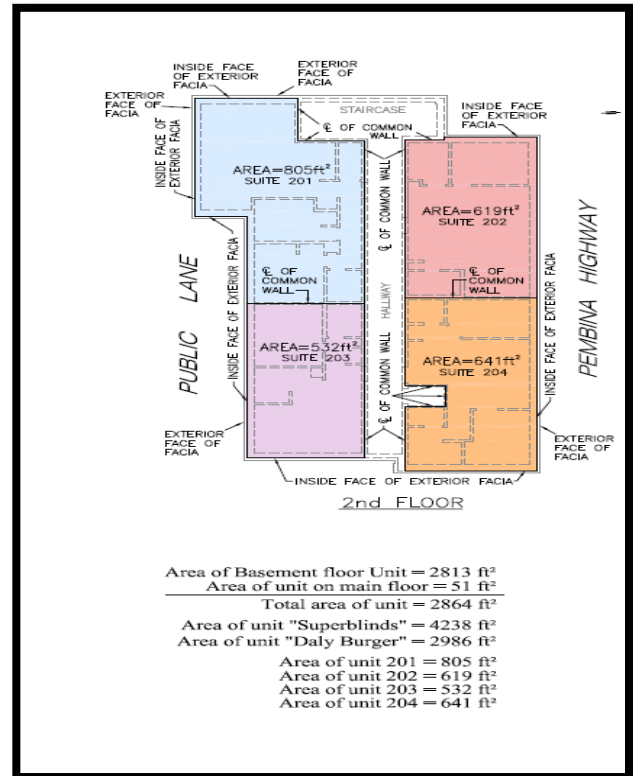
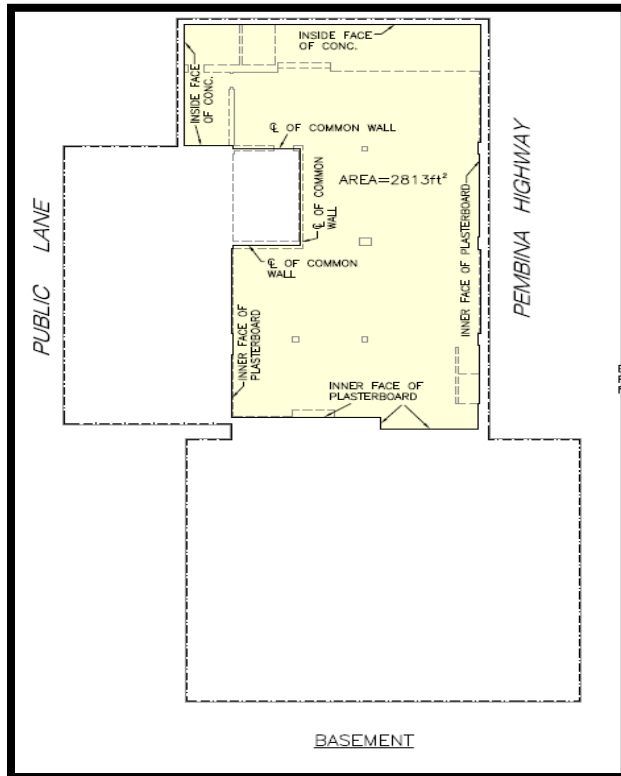


Mark Thiessen
204.794.5700
markthiessen@remax.net

M

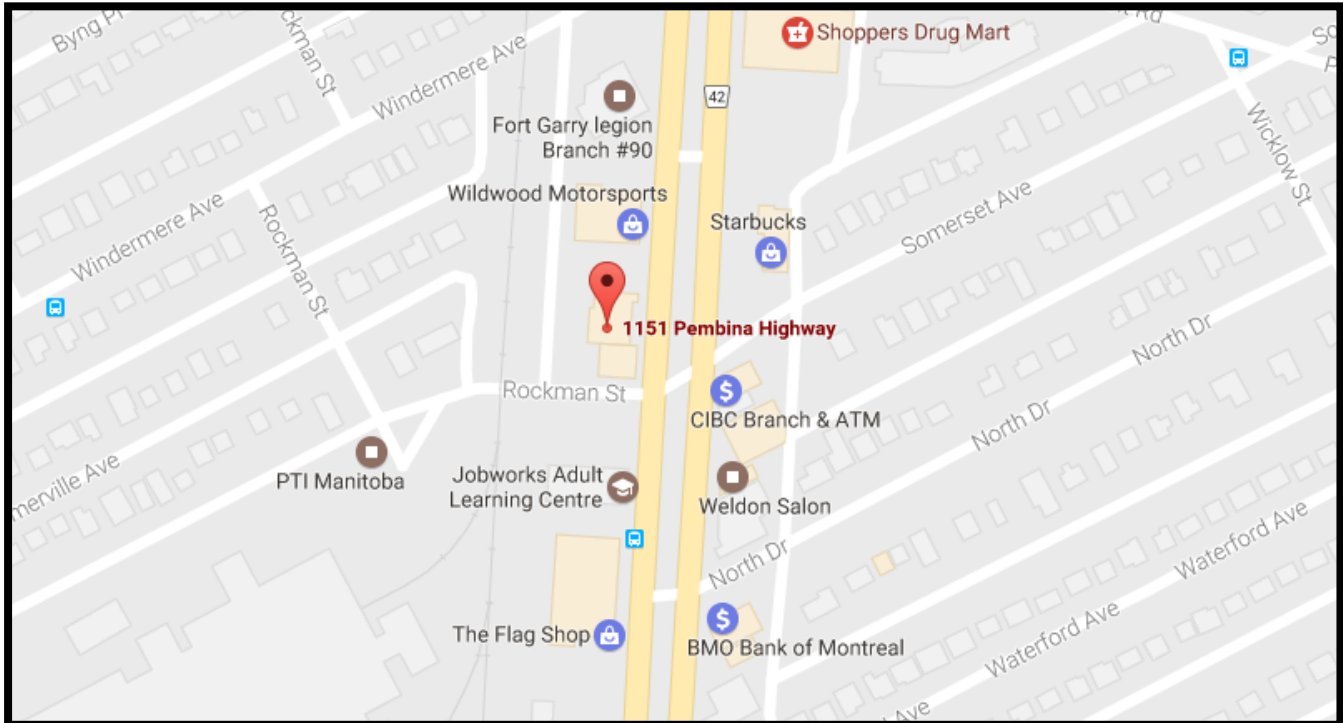
T

Property Description



- Great exposure on one of Winnipeg's busiest thoroughfares
- Beautiful remodeled exterior
- Directly across from Shoppers Drug Mart, CIBC and Starbucks
- On-site parking available
- Building is completely modernized
- C2 Zoning

Property Details



Asking Price: Second Floor – \$12.00 per square foot

Basement - \$7.00 per square foot

Additional Rent: \$5.25 plus utilities

Area Available: options - 532, 619, 641, 805, 1260, or 1337 square feet

Location: Prominently located on the west side of Pembina Highway.

The information contained herein has been provided to RE/MAX professionals by others. We do not warrant its accuracy. You are advised to independently verify the information prior to submitting an offer & to provide for sufficient due diligence in an offer. The info contained herein may change from time to time without notice. The property may be withdrawn from the market at any time without notice.

RE/MAX Commercial is a division of RE/MAX professionals. Each office independently owned and operated.